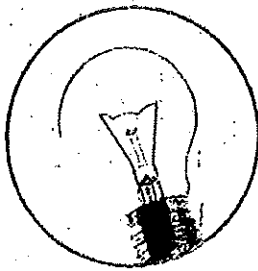
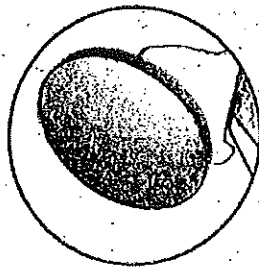


# I FALSI AMICI

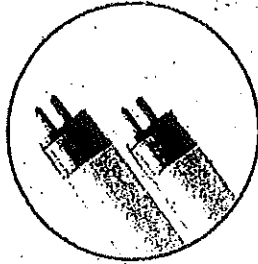
C'è vetro e vetro. Perché alcuni oggetti, che istintivamente butteremmo nel cassonetto del vetro, hanno in realtà un'altra destinazione. **Eccoli:**



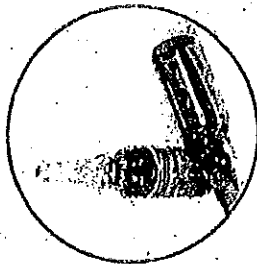
Lampadine



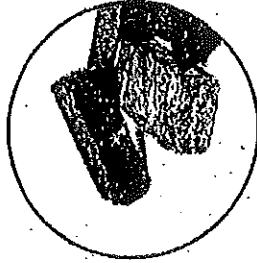
Specchi



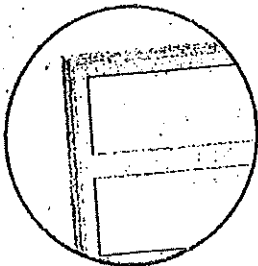
Tubi al neon



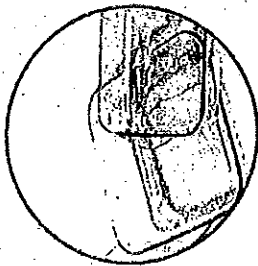
Confezioni in vetro dei farmaci usati



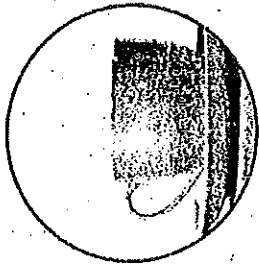
Pietre, sassi e inerti



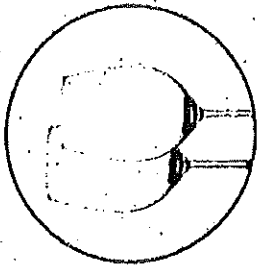
Vetri di finestre, finestrini di auto, vetri di fari e fanali



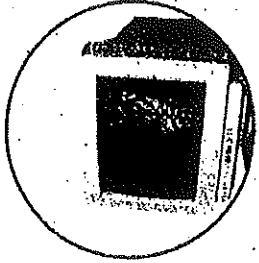
Contenitori in vetroceramica (pyrex, etc.)



Oggetti in ceramica e porcellana



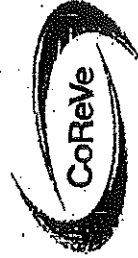
Oggetti in cristallo (bicchieri, lampadari, centrotavola, etc.)



Tubi del televisore e schermi di tv, computer, monitor



Per conoscere l'esatta destinazione di ognuno di questi falsi amici, vai su [www.coreve.it](http://www.coreve.it)



CONSORZIO RECUPERO VETRO